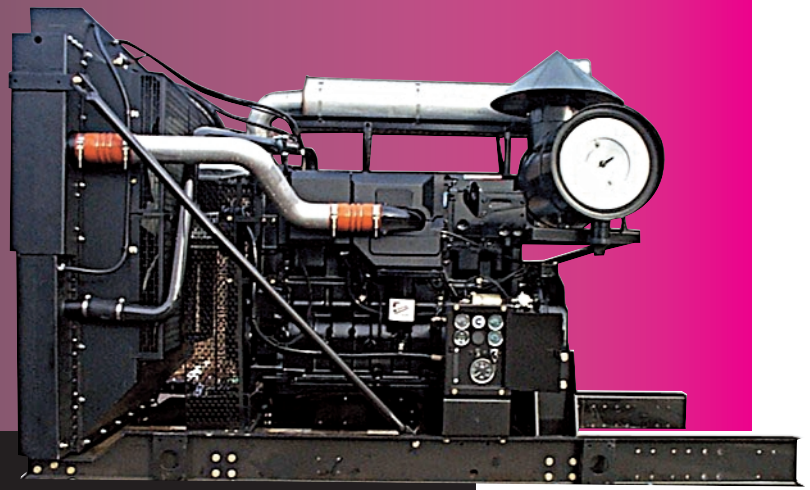


Q SX15



INDUSTRIAL SPECIFICATIONS

360-600 HP
268-447 KW



PERFORMANCE RATING

Maximum Horsepower: 600*hp
@ 2100 rpm

Maximum Torque: 2050 lb-ft
@ 1400rpm

Nominal Torque Rise: 37%

Fuel Economy: .35 lb/bhp-hr
@ 2100 rpm

*Restricted Rating

Curves shown represent gross engine performance capabilities obtained and corrected in accordance with SAE J1995 conditions of 100kPa (29.61 in. Hg) barometric pressure (91m [300 ft.] altitude), 25°C (77°F) inlet air temperature, and 1kPa (0.30 in. Hg) water vapor pressure with No. 2 diesel fuel.

All data is based on engine operating with fuel system, water pump, and 386 mm H₂O (15 in. H₂O) inlet air restriction and with 51 mm Hg (2.0 in. Hg) exhaust restriction; not included are alternator, fan, optional equipment and driven components.

The engine may be operated up to 1,371.6m (4,500 ft.) altitude before electronic derate is applied.

RATINGS

Engine Model	Rated Power		Peak Power		Peak Torque
	HP	RPM	HP	RPM	LB-FT RPM
QSX15-600-P*	600	@ 2100	660	@ 1900	2050 @ 1400
QSX15-540-P	540	@ 2100	557	@ 1900	1730 @ 1400
QSX15-525-P	525	@ 2100	578	@ 1800	1800 @ 1400
QSX15-500-P	500	@ 2100	550	@ 1800	1743 @ 1400
QSX15-475-P	475	@ 2100	534	@ 1700	1743 @ 1400
QSX15-425-P	425	@ 2100	468	@ 1800	1435 @ 1400

* Restricted Ratings

Additional ratings may be available, check with your Cummins Distributor or Dealer.

Q SX15

KEY FEATURES

Patented Variable Output Turbo System Delivers maximum performance without overboost at high speeds, increased airflow at lower speeds for improved responsiveness. The integrated air-handling system improves combustion and fuel economy.

Improved Reliability with One-Third Fewer Parts Integrated design eliminates hoses, fittings and vibration problems. Premium edge-molded gaskets are engineered to meet the design goal of a totally leak-free engine. The result is increased reliability with less downtime.

High Pressure Fuel System Operates at up to 28,000 psi for cleaner, more complete combustion. Proven reliability in mining and construction applications.

Dual Overhead Camshafts Unique DOHC design delivers superior engine performance and exceptional engine braking. The first cam drives high-pressure fuel injection and extra-wide lobes for longer life and higher pressure capacity. The second cam operates the intake and exhaust valves.

Reduced Maintenance Advanced Fleetguard ES System® oil and fuel filters deliver up to 500-hour service intervals.

Heavy-Duty Rings, Pistons and Bearings Built to last in excess of 21,000 hours (35% load factor) with high-strength alloys and high-output design.

Full Authority Electronic Controls Optimized engine operation, diagnostics, prognostics and more. Industry standard datalinks.

Instrumentation Left/Right Side

12V-24V Shutdown Protection

Blower/Sucker Cooling Fans

Over Center-Spread Bearing PTO Options

Heavy Duty Air Cleaner

Exhaust Mufflers Vertical-Horizontal

Cummins Worldwide Industrial Warranty

SPECIFICATIONS

Engine Type.....Inline, 4-cycle
Number of Cylinders.....6
Displacement.....15L (915 cu. in.)
Bore and Stroke.....136.9mm (5.39 in.)x 170.2mm(6.7 in.)

Oil System Capacity.....45.42L (48 US qts.)
Cooling Capacity: Open.....87.98L (93 US qts.)

OPEN

Length.....3065mm (120.68 in.)
Width.....1518mm (59.76 in.)
Height*.....1882mm (74.10 in.)
Weight (dry).....2333Kg (5,144 lbs.)

* Top of Air Cleaner

Cummins Power Products

A NEW GENERATION OF POWER

21810 Clessie Court
New Hudson, Michigan 48165

248.573.1600

fax 248.573.4014

www.cumminspowerproducts.com